

CTE Career Pathway Readiness Opportunities



Health Sciences & Medical Careers



High school courses

Career and Technical Education (CTE) courses integrate rigor in academics, and career and leadership skills.

Industry certifications (professional cert) are noted with*
Fundamentals of Patient Care Certificate: Nursing Assistant
(21-22 @ EHS only)

Dual credit (college credit) courses are noted with **

| Core Courses | Exploratory Courses | Advanced Courses | Skill Center Courses |
|-----------------------------|--|------------------------------|----------------------|
| Algebra 1 and 2 | Anatomy and Physiology ** | Fundamentals of Patient Care | Pre-Nursing (NAC) |
| Biology and the Environment | Biotechnology | Patient Care Fundamentals | Medical Terminology |
| Chemistry | Health Careers & Medical Terminology** | AP Physics | |
| Family Health | Nutrition and Wellness | AP Psychology | |
| | Nutrition and Food Prep I, II | | |
| | Sports Medicine 1, 2 and 3 | | |
| | Independent Living | | |



Career and Technical Student Organizations (CTSOs)

CTSOs are part of all CTE courses. Students can explore careers, and practice their skills through competition at local, regional and national levels through after school programs.

- ☞ Health Occupations Students of America (HOSA)
- ☞ Skills USA
- ☞ Washington Career Technical Sports Medicine Association (WCTSMA)



Work based learning

These are learning experiences that provide career guidance and exploration: job shadows, internships, apprenticeships, community speakers, field trips and jobs.

- ☞ Medical Careers Internship
- ☞ Sports Medicine Internship

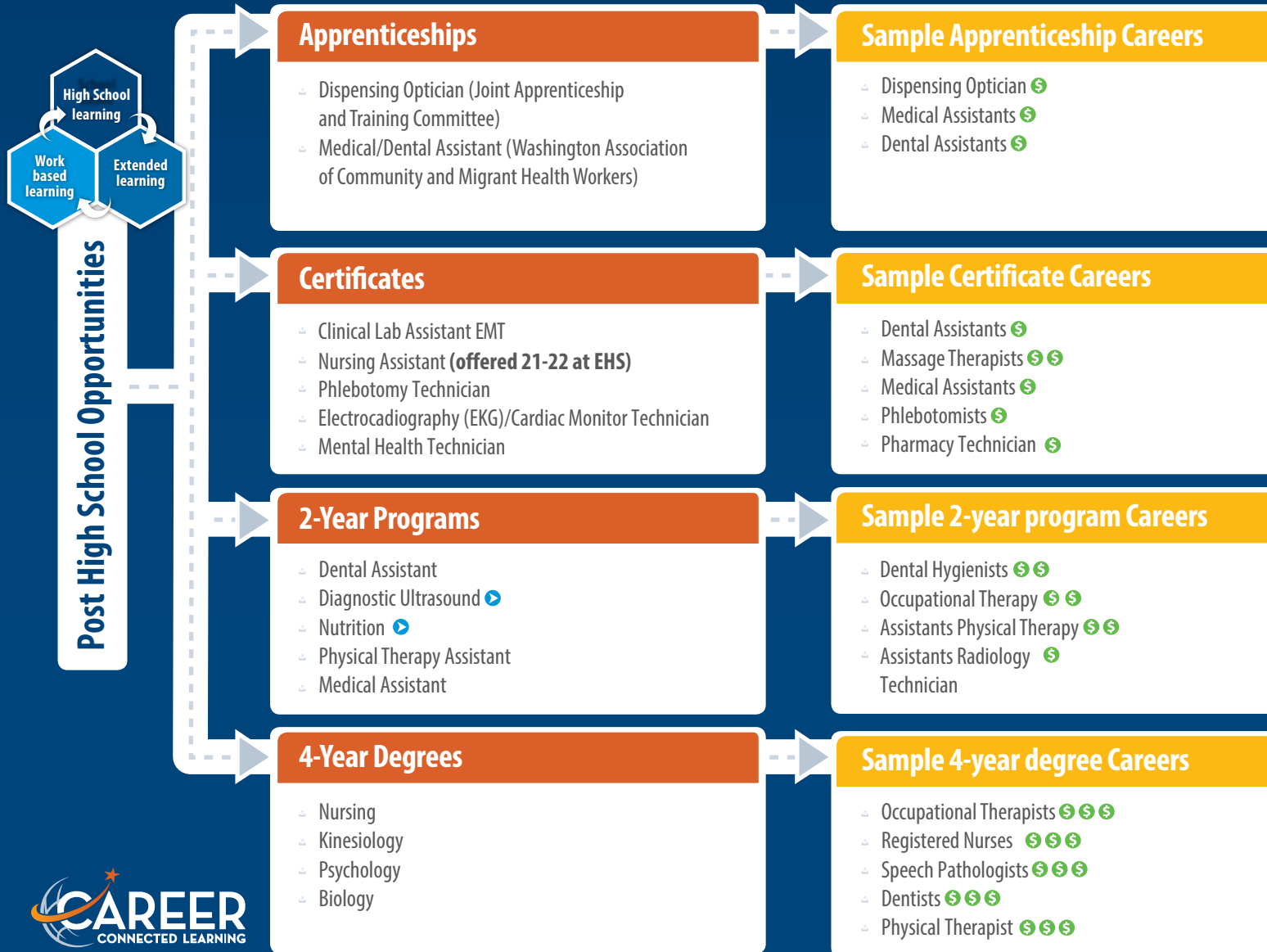


For more information regarding Everett Public Schools Career Pathways, please contact your high school's career specialist and counselors. Visit the CTE web page on: Everettsd.org

Document updated: Dec 2020

Pathways to Health Sciences & Medical Careers

Health and medical careers are all about helping others live healthy and productive lives. This field is for you, if you want to work in the medical field from mental health to research, and sports medicine.



SKILLS

- Social perception
- Service orientation
- Strong math & science skills
- Good decision-making
- Active listening

TRANSFER

▶ = Transfer degree only

SALARIES

\$ = Max \$25/hr

\$\$ = Max \$26-40/hr

\$\$\$ = Max > \$40/hr

For more information regarding Everett Public Schools Career Pathways, please contact your high school's career specialist and counselors.

Visit the CTE web page on: Everettsd.org

Document updated: Dec. 2020